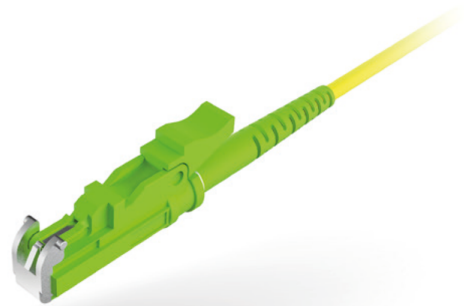


E-2000™, officially known as LSH, is the latest version of DIN connectors. This high-performance connector with snap coupling (push-pull) and floating ferrule without lateral forces is used for many applications but excellent for difficult surroundings like railway tunnels and high-end transmission systems. The unique metal dust and laser protection cap makes it also safe for use with high power.

Novobit currently offers all types of assemblies with Reichle de Massari's E-2000 products. According to standards IEC 61754-15 / TIA 604-16 and performance standard IEC 50377-8-x (includes IEC-61753, IEC 61754-4, IEC 61755-3-2 standards).

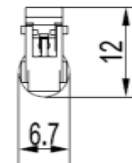
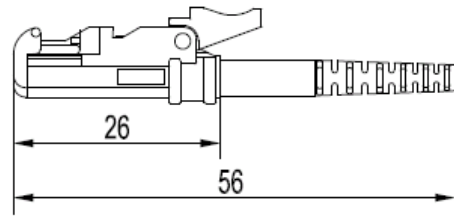
It can be assembled with cables from  $\varnothing 0.6\text{mm}$  up to  $\varnothing 3.0\text{mm}$ . The R&M E2000™ connector-kit meet category U for uncontrolled environment and may be used between  $-25$  and  $+ 70^{\circ}\text{C}$  and is available as simplex.



| Assembly Specifications                       |     | Single-mode |              | Multi-mode  |
|---|-----|-------------|--------------|-------------|
| Performance Class                             |     | Grade B     | Grade C      | Grade M     |
| <b>IL max. against reference [dB]</b>         |     | 0.15        | 0.35         | 0.35        |
| <b>IL typical against reference [dB]</b>      |     | 0.06        | 0.12         | 0.20        |
| <b>Return Loss [dB]</b>                       | PC  | $\geq 45$   | $\geq 45$    | $\geq 27$   |
|   | UPC | $\geq 55$   | $\geq 55$    | $\geq 30$   |
|   | APC | $\geq 65$   | $\geq 65$    | -           |
| <b>Fiber Height [nm]</b>                      | PC  | -50 to +50  | -50 to +100  | -50 to +100 |
|   | APC | -50 to +50  | -100 to +100 | -           |
| <b>Apex Offset [<math>\mu\text{m}</math>]</b> |     | $\leq 50$   | $\leq 50$    | $\leq 50$   |
| <b>Radius [mm]</b>                            | PC  | 5 to 25     | 5 to 25      | 5 to 25     |
|   | APC | 5 to 12     | 5 to 12      | -           |
| <b>Angle (°) of APC</b>                       |     | $8 \pm 0.4$ | $8 \pm 0.4$  | -           |
| <b>Tensile Strength [N]</b>                   |     | $> 100$     | $> 100$      | $> 100$     |

# E2000 Connectors & Adapters

| Connector Specification |   |
|-------------------------|---|
| <b>Housing</b>          | Plastic; blue, green, beige<br>customized colors on request |
| <b>Ferrule Diameter</b> | Zircona<br>D: 1.25mm<br>d: 125.3-126.3µm                    |
| <b>Concentricity</b>    | ≤1.0µm (SM); ≤4.0µm (MM)                                    |
| <b>Cable Diameter</b>   | 0.6 - 3mm   |
| <b>Flammability</b>     | UL 94 V-0   |
| <b>Humidity</b>         | 95 %  |
| <b>Durability</b>       | ≥1000 Matings   |
| <b>Tensile Strength</b> | 70N   |
| <b>RoHS/REACH</b>       | Compliant   |



| Adapter Specifications:          |                  |
|----------------------------------|------------------|
| <b>Attenuation</b>               | < 0,2 dB         |
| <b>Repeatability 1000 cycles</b> | < 0.2 dB         |
| <b>Service life</b>              | > 1000           |
| <b>Temperature</b>               | -25 °C to +70 °C |
| <b>Flammability</b>              | UL 94 V-0        |
| <b>Humidity</b>                  | 95 %             |
| <b>Sleeve material</b>           | Ceramic          |
| <b>RoHS/REACH</b>                | Compliant        |

