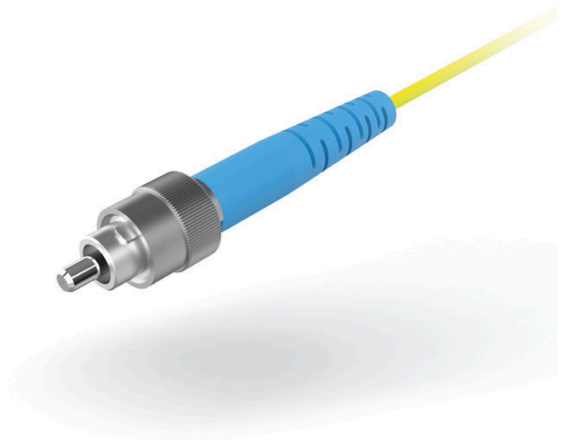


The FC connector with screw coupling was the first connector with floating ferrule and a tuning feature. It is designed for use in high vibration environment securing reliable connections.

As the Push pull designs are preferred in networks today the FC connector is mainly used on test equipment, where a good quality connection is required. Therefore many test equipment manufacturers still use it on their equipment. It is highly recommended in laboratories due to its construction and reliability.

According to standards IEC 61754-13 / TIA 604-4 and performance standard: IEC 50377-2. (includes IEC-61753, IEC 61754-13, IEC 61755-3-2)

It can be assembled with cables from  $\varnothing 0.6\text{mm}$  up to  $\varnothing 3.0\text{mm}$ . The Novobit FC connector-kit meet category E for extreme environment and may be used between  $-40\text{ }^{\circ}\text{C}$  and  $+85\text{ }^{\circ}\text{C}$  and is available as simplex.

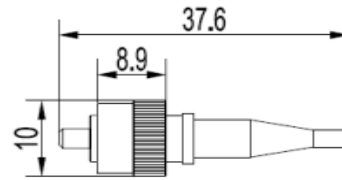


Assembly Specifications		Single-mode		Multi-mode
Performance Class		Grade B	Grade C	Grade M
IL max. against reference [dB]		0.15	0.35	0.35
IL typical against reference [dB]		0.06	0.12	0.20
Return Loss [dB]	PC	$\geq 45$	$\geq 45$	$\geq 27$
	UPC	$\geq 55$	$\geq 55$	$\geq 30$
	APC	$\geq 65$	$\geq 65$	-
Fiber Height [nm]	PC	-50 to +50	-50 to +100	-50 to +100
	APC	-50 to +50	-100 to +100	-
Apex Offset [ $\mu\text{m}$ ]		$\leq 50$	$\leq 50$	$\leq 50$
Radius [mm]	PC	5 to 25	5 to 25	5 to 25
	APC	5 to 12	5 to 12	-
Angle ( $^{\circ}$ ) of APC		$8 \pm 0.4$	$8 \pm 0.4$	-
Tensile Strength [N]		$> 100$	$> 100$	$> 100$

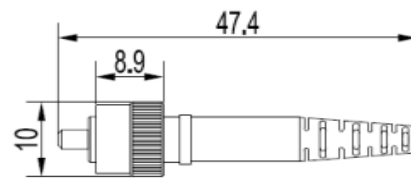
# FC Connectors & Adapters

Connector Specification	
<b>Housing</b>	Metal
<b>Ferrule Diameter</b>	Ceramic D: 1.25mm d: 125.3-126.3µm
<b>Concentricity</b>	≤1.0µm (SM, PC) ≤0.8µm (APC) ≤4.0µm (MM)
<b>Tuning</b>	60 degrees step
<b>Cable Diameter</b>	0.6 - 3mm
<b>Flammability</b>	UL 94 V-0
<b>Humidity</b>	95 %
<b>Durability</b>	≥1000 Matings
<b>Tensile Strength</b>	100N
<b>RoHS/REACH</b>	Compliant

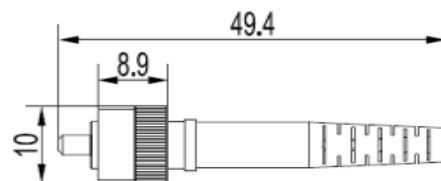
FC connector 0.9



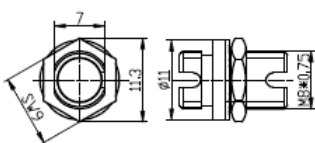
FC connector 2.0



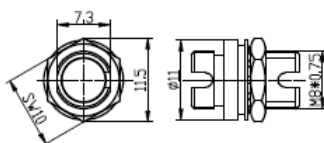
FC connector 3.0



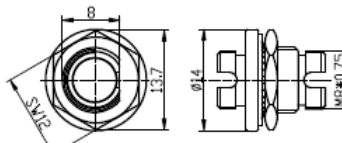
Adapter Specifications:	
<b>Attenuation</b>	< 0,2 dB
<b>Repeatability 1000 cycles</b>	< 0.2 dB
<b>Service life</b>	> 1000
<b>Temperature</b>	-25 °C to +70 °C
<b>Flammability</b>	UL 94 V-0
<b>Humidity</b>	95 %
<b>Sleeve material</b>	Ceramic
<b>RoHS/REACH</b>	Compliant



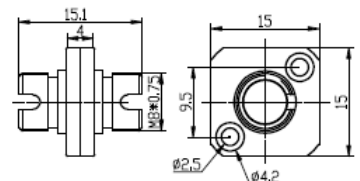
11mm Flange (SW9)



11mm Flange (SW10)



14mm Flange



Square Adapter