



# SEIKOH GIKEN

## LC Uniboot Connector Intelli-Cross Series

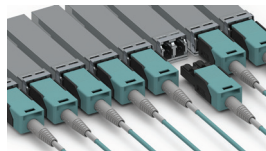
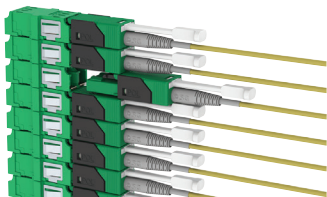
### Seikoh Giken Intelli-Cross Series LC Uniboot Connector with “Intelligent” Keying For Hyper Density Panel Management

With an ultra compact, low-profile form factor, the Intelli-Cross Series LC Uniboot Connector incorporates a proprietary, patent pending micro-gear mechanism that "intelligently" syncs the A-B housing keys during polarity reconfigurations.

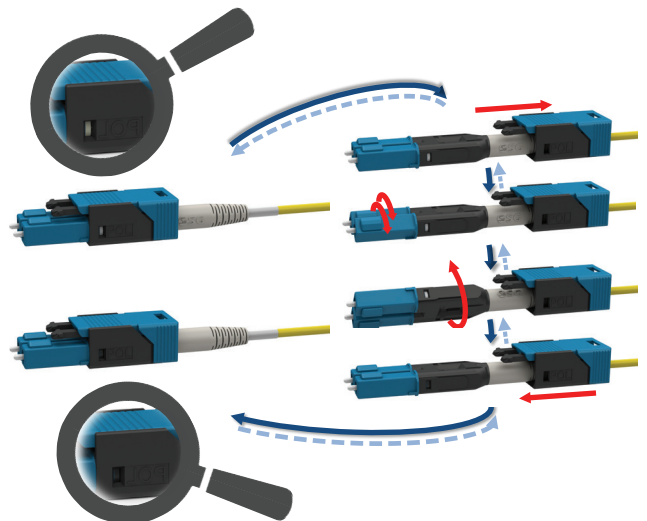
The Intelli-Cross LDX Series LC Duplex connectors are available in mini-short and angle boot formats and come in 12 colors. Both Singlemode PC & APC as well as Multimode OM1, OM3, OM4, and OM5 body styles are available.

#### ■ Main Features

- Fast and Easy polarity change with no tools required
- Fast and Easy polishing, both PC and APC Duplex
- Applicable for  $\phi 2\text{mm}$  &  $\phi 3\text{mm}$  jacketed cable
- High density installation with low profile & Optional Push-pull tool

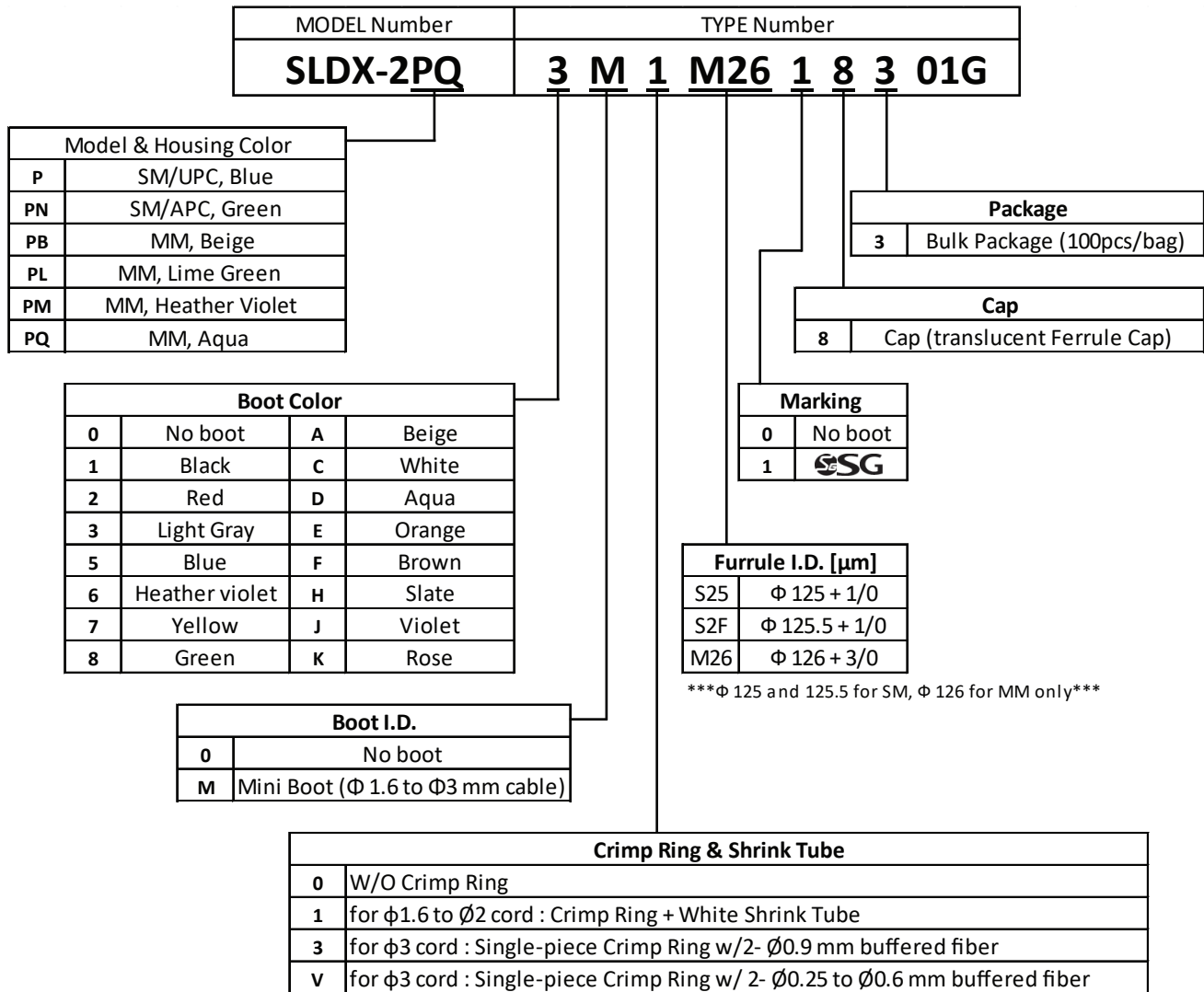


#### ■ Easy Reverse polarity

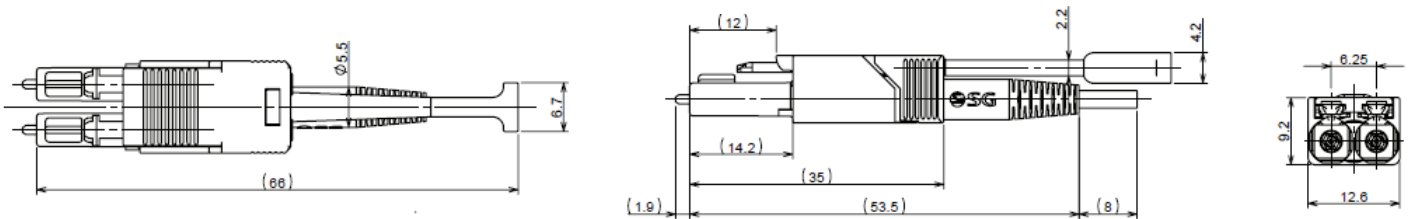


 SEIKOH GIKEN

## Ordering Information



## Dimensions



### WORLDWIDE SUBSIDIARIES AND SALES OFFICES:

#### North America

Atlanta, Georgia  
 Tel: +1-770-279-6602  
 Fax: +1-770-279-8839  
[sales@sg-usa.com](mailto:sales@sg-usa.com)

#### Europe

Frankfurt, Germany  
 Tel: +49-6102-297-700  
 Fax: +49-6102-297-750  
[info@sg-euro.de](mailto:info@sg-euro.de)

#### Asia

Matsudo, Japan  
 Tel: +81-47-388-6111  
 Fax: +81-47-388-4477  
[sales.div@seikoh-giken.co.jp](mailto:sales.div@seikoh-giken.co.jp)

#### China

Hangzhou, PRC  
 Tel: +86-571-8777-4098  
 Fax: +86-571-8777-4099  
[sales@sg-h.cn](mailto:sales@sg-h.cn)

